

## BUFFER WATER TANK



Solareast Group has 5 production bases all over China, the one located in Shunde, Guangdong focuses on air source heat pump.

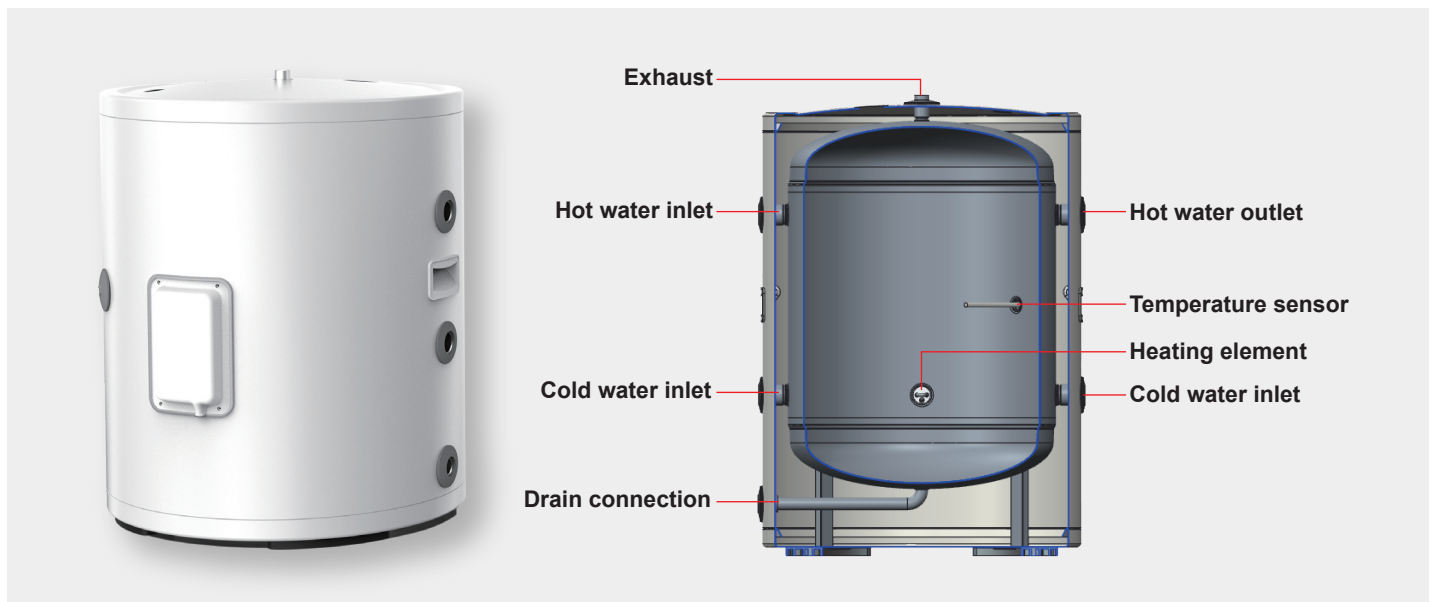
This factory is over 100,000m<sup>2</sup> with production capacity of 80,000 sets heat pump per Month, and we have invested USD 2 million to build the most advanced testing labs which can test up to 300kW machine under extremely cold climate down to -30°C.

Solareast heat pump factory has got ISO9001, ISO14001, ISO18001 and our products have been approved by CE, Rohs, CB, SAA, ErP, etc...

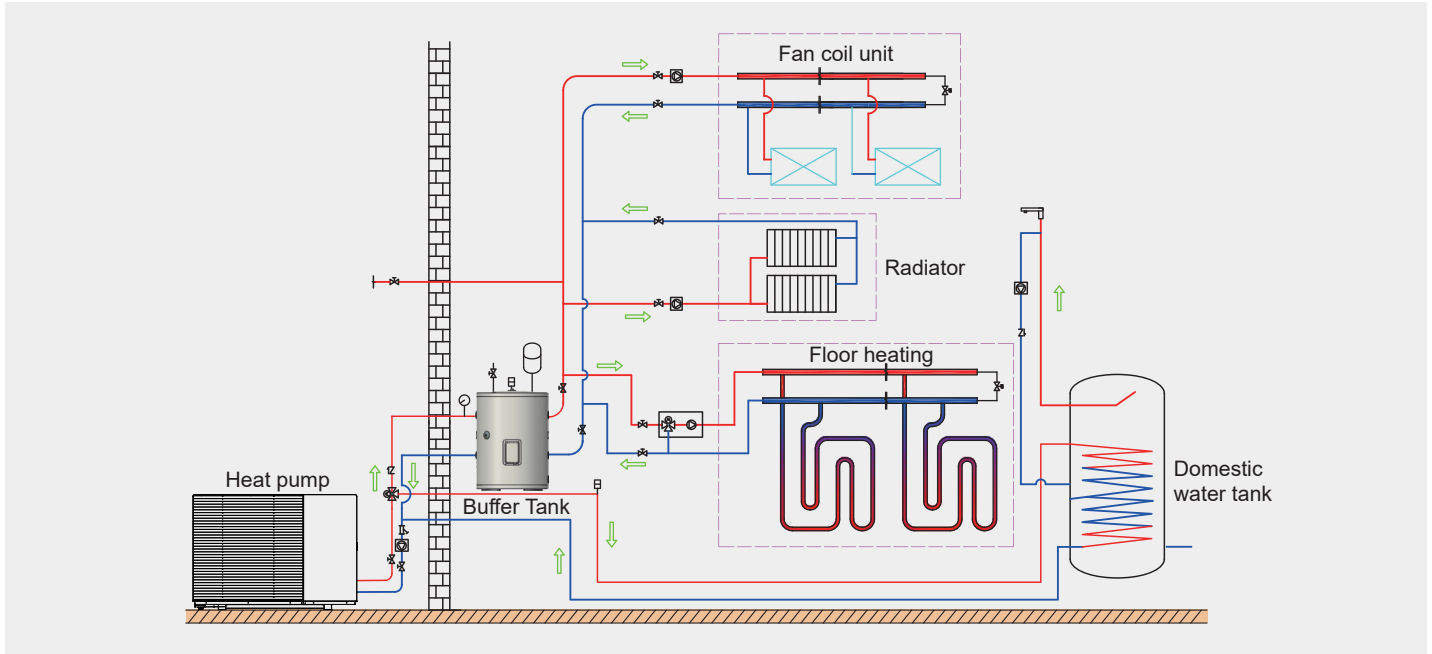
Solareast always treasures the product quality and builds a complete quality management system. It controls the whole process of heat pump developing, testing, production, installation and service.

With reliable products, customized proposals and turnkey solutions, Solareast has supported many big brands to take more share on the market.

### Structure Diagram



## Application



## Buffer Water Tank Parameter Table



Name	Unit	80L	100L	150L	200L
Water tank volume	L	80	100	150	200
Inner tank Diameter	mm	φ470	φ470	φ470	φ470
Outer tank diameter	mm	φ560	φ560	φ560	φ560
Water tank height	mm	691	807	1095	1383
Package size	mm	640*640*750	640*640*910	640*640*1160	640*640*1440
Inlet/outlet size	inch	G-1/4	G-1/4	G-1/4	G-1/4
Temp. sensor connection size	inch	G-1/2	G-1/2	G-1/2	G-1/2
Heating element connection size	inch	G1	G1	G1	G1
Air vent	inch	G-1/2	G-1/2	G-1/2	G-1/2
Drain connection size	inch	G-3/4	G-3/4	G-3/4	G-3/4
Heating element	kW	2	2	2	2
Max. Working Pressure	bar	6	6	6	6
Max. Testing Pressure	bar	10	10	10	10
Max. Running Temperature	°C	90	90	90	90

### Solareast Heat Pump Ltd

Address: No. 73 Defu Road, Xingtan Town, Shunde Foshan, Guangdong, China

E-mail: [heatpump@solareast.com](mailto:heatpump@solareast.com)

Tel: +86 757 29380616

Web: <http://www.solareastheatpump.com>